

Environment Manager

The enov8 environment management platform allows enterprises to better understand & manage their complex computer systems & the end-to-end IT fabric through a centralised portal.

Product Features



Environment Modelling



Visualize Dependencies



Real Time Health Monitoring



Booking & Change Requests



Contention & Scenario Analysis



Environment Scheduling



ITSM & DevOps Integration



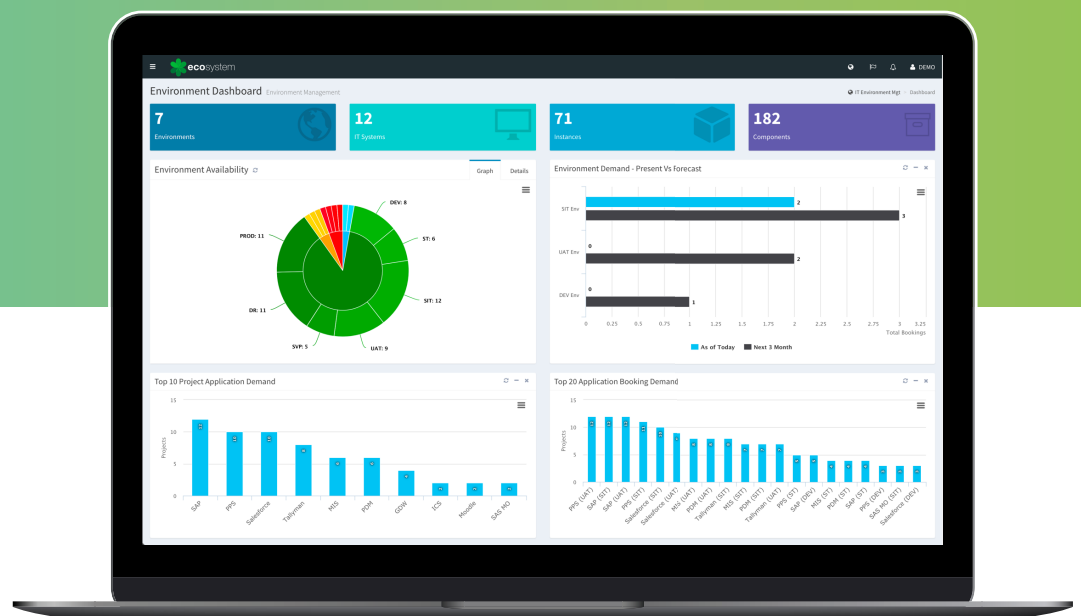
Self Service Gateway



Dashboards & Reporting



Extensible Engine



Enov8 supports flexible hosting options and is available On-Premise or as SaaS.

Benefits:

- Environment visibility
- Real time health status
- Streamlined provisioning
- Powerful analytical functions
- Repeatable configuration
- Less disruption and outages
- On time project delivery
- Control IT spend

The Platform Captures:

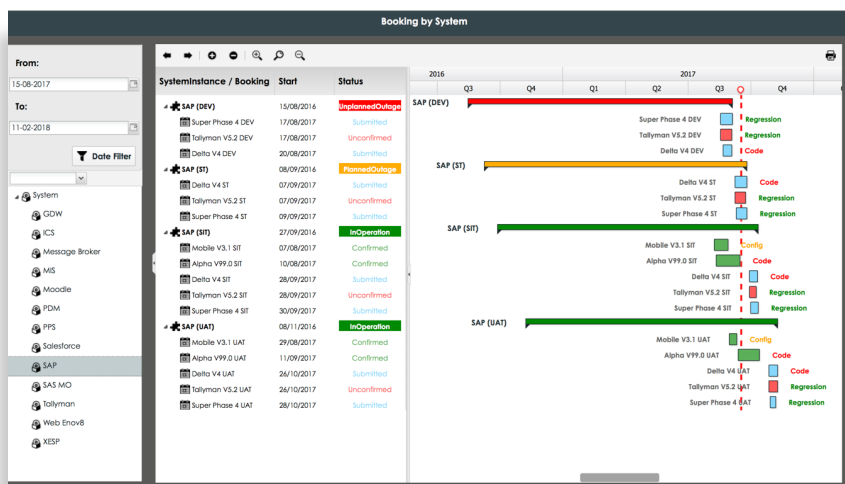
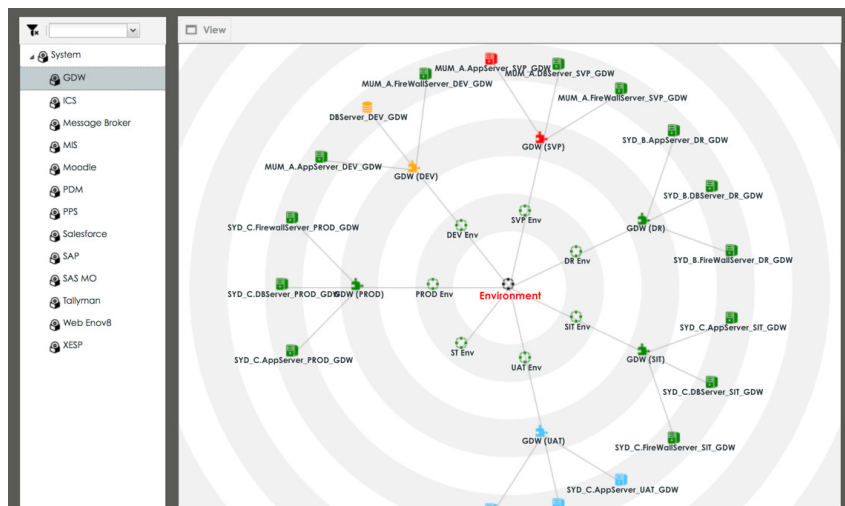
- Environment demand
- Usage & contention
- Environment planning
- Environment events
- Service catalogue
- Automated runbook operations.
- Environment & programme financials

Out of the box enov8 streamlines business processes for projects and test teams by enabling modelling of IT environment resources and relationships, this visualisation provides an organisation insight to drive better decision making, project delivery and resource cost optimization.

Environment Modelling

Represent environment lanes, business processes, systems, instances, components, labs, interfaces in one platform.

Monitor health of environment lanes, system instances & components via out of the box lean synthetics. Or integrate with your existing monitoring and test synthetic tools.



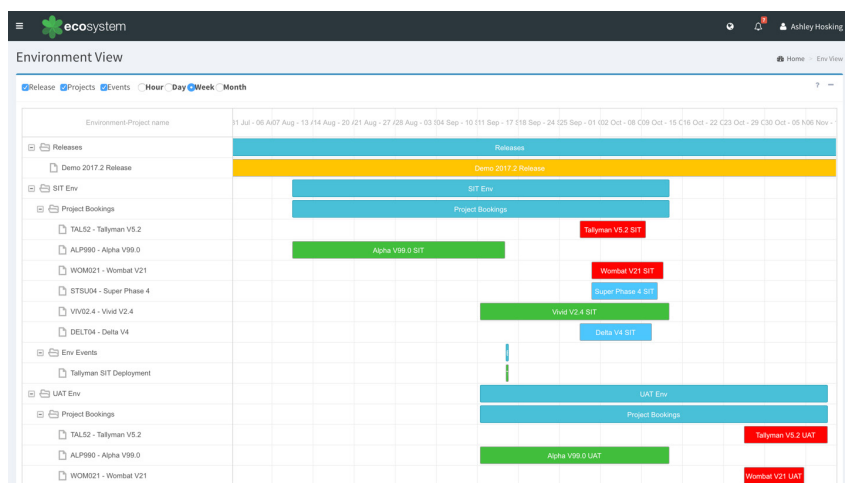
Environment Demand

Enables the capture of systems & instance requirements for projects & test teams earlier in the lifecycle by identifying and managing system unavailability, contention and redundancy.

Plan & Coordinate Environment Events

Ensure environments are fit for purpose, provisioned and configured in a timely fashion.

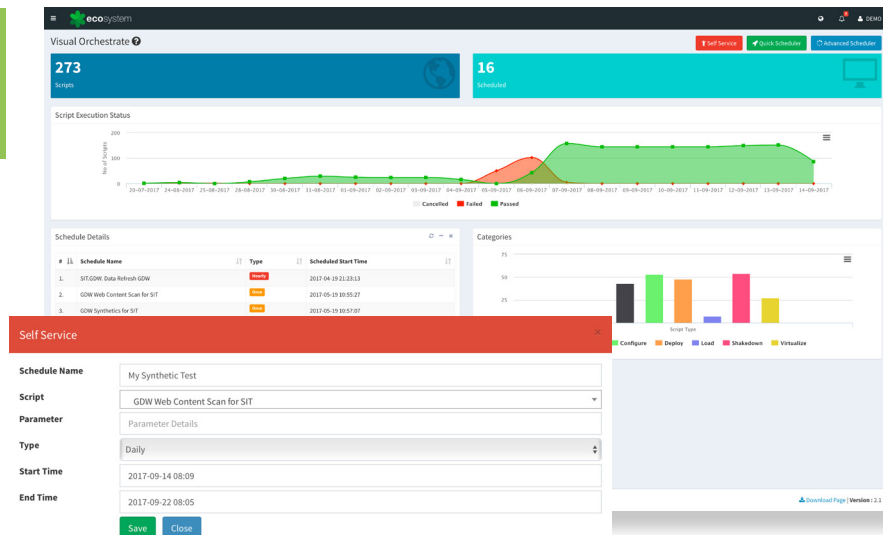
Centralised calendaring delivers full visibility of projects, teams, systems and environments.



Streamline Environment Operations & Self-Service

Eliminate chaotic and non-repeatable operations by establishing control through centralised runbooks and using automation on regular & time consuming tasks.

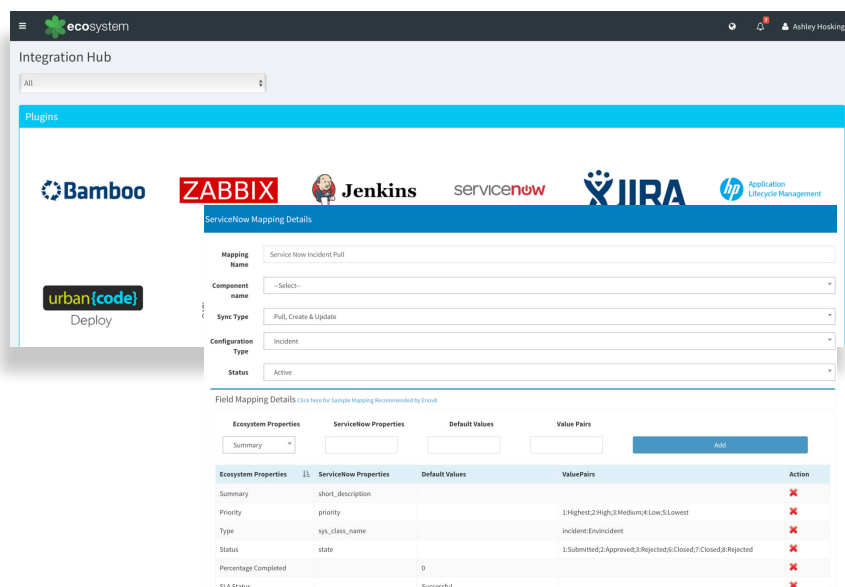
Make automation available to project & test teams through a self-service gateway to improve productivity.



Seamless Integration for Tools & Data Sources

Enov8's flexible integration hub simplifies moving between tools to capture data or orchestrate environment tasks.

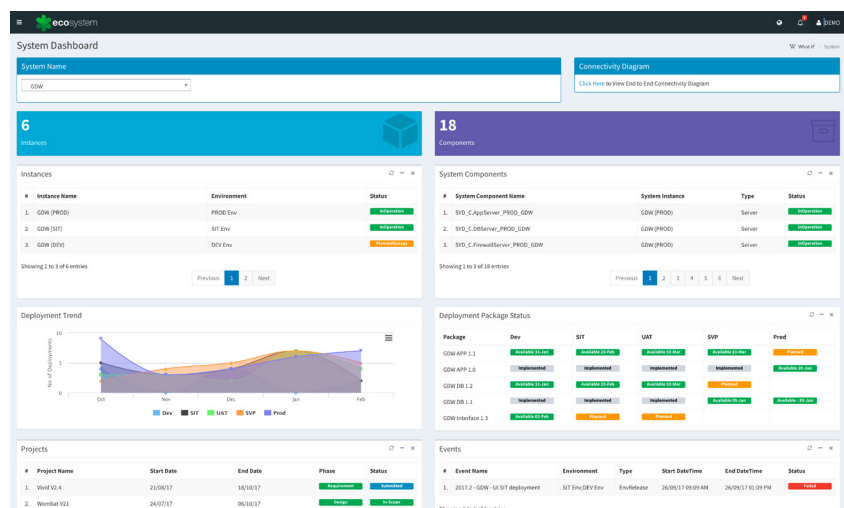
This includes tools across monitoring, DevOps, infrastructure, data, deployment & versioning.



Environment Status Accounting & Reporting

Centralise environment operations & release information to allow real-time analytics, timely decision making & continuous improvement.

Executive dashboarding enables the sharing of reports & forms with executive stakeholders across the organisation.



Who is it for?

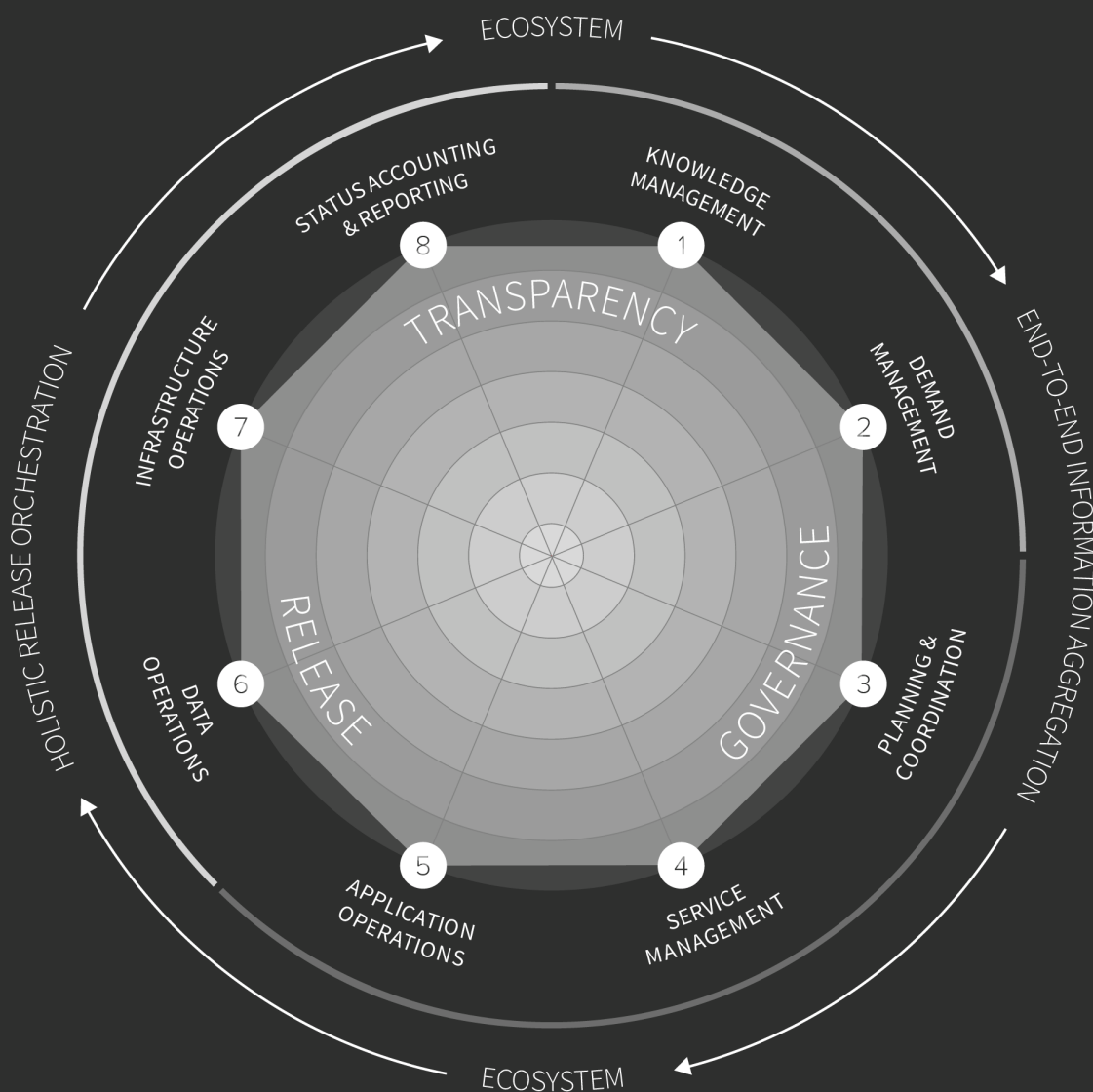
Enov8 Environment Manager is a central repository of the end-to-end IT fabric that becomes the single source of truth and hub that supports anyone who depends on an organisations IT environment resources.

This includes:

- IT operations teams
- Test environment management
- Production & non-production support
- System/asset teams
- Release teams
- Architecture
- Development teams
- Test teams

Scope

Enov8 Environment Manager has been designed to address the eight dimensions of the Environment Management Maturity Index (EMMI).



www.enov8.com
contact@enov8.com

enov8 are the market leader in test environment, release and holistic test data management solutions. Our unique platform powered by the ecosystem extensible engine transforms the way an organisation conducts their test environment management and release operations. By automating manual processes, better promoting existing toolchains and providing a single unified view of the IT fabric, an organisation can deliver projects faster, provide decision making insight and align IT operations with business goals.