

# ELEVATE YOUR IT & TEST ENVIRONMENT EFFICIENCY

Managing your lower environments is critical to software delivery success.

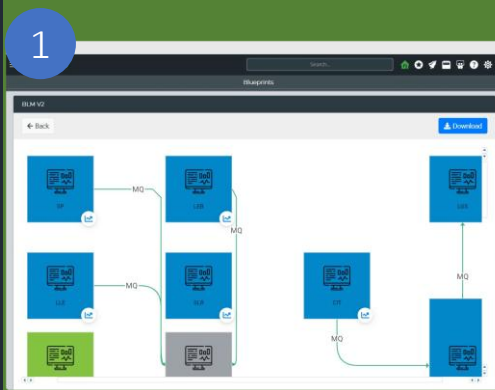
Poor management can lead to delays, quality issues, and unnecessary costs in infrastructure, licensing, and services.

Advance with Enov8: Fast-track your deliveries with enhanced governance and insights for your IT platforms, data, and release processes.

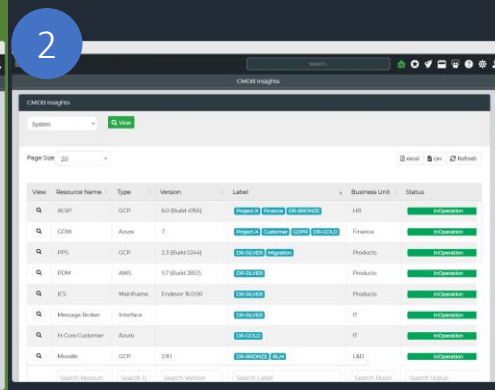


Innovate with Enov8!

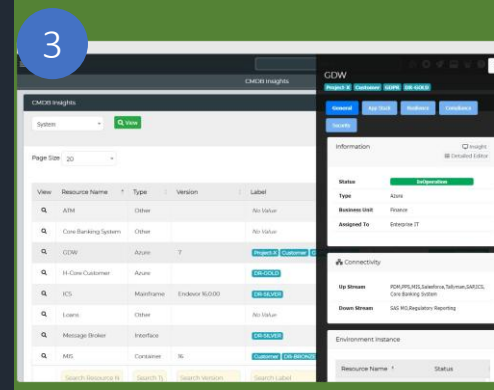
Schedule a Chat with our Experts



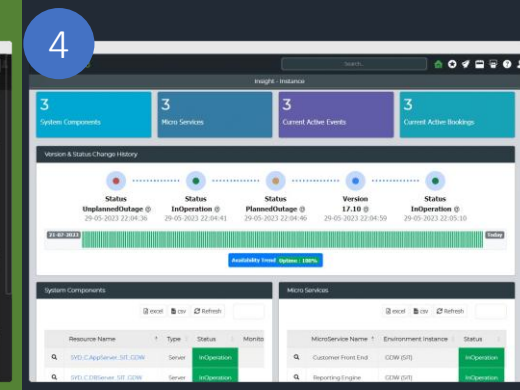
**Architectural Blueprinting:** Visualize your environments and applications with dynamic & real-time architecture diagrams.



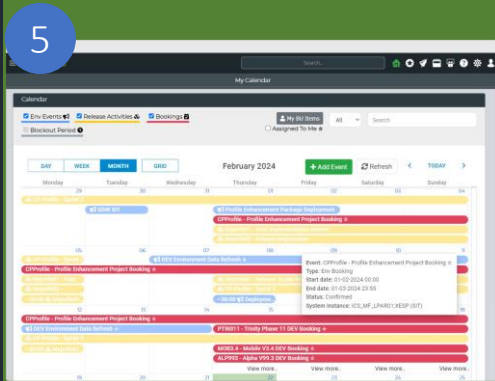
**SDLC Aware CMDB:** Streamline projects & test with a source-of-truth that aligns to your delivery and quality objectives.



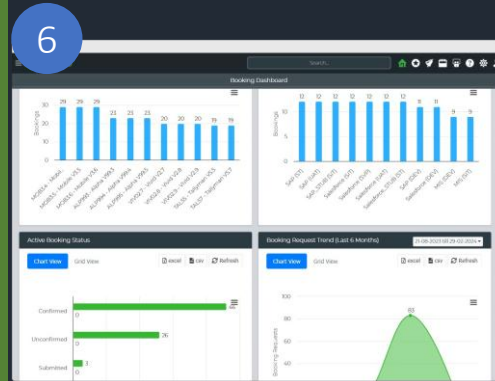
**Application Fact Sheets:** Capture resilience, security, compliance, & tech trend data to enhance stakeholder decision making.



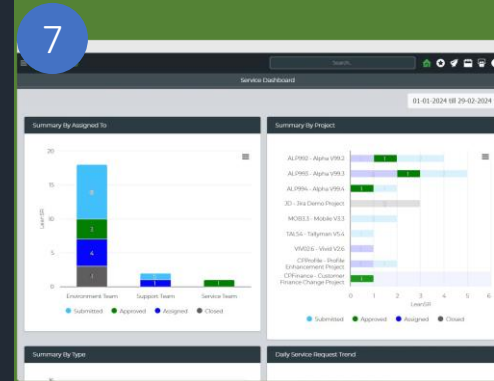
**Information Walls:** Customize dashboards to display key operational metrics and align with your priorities.



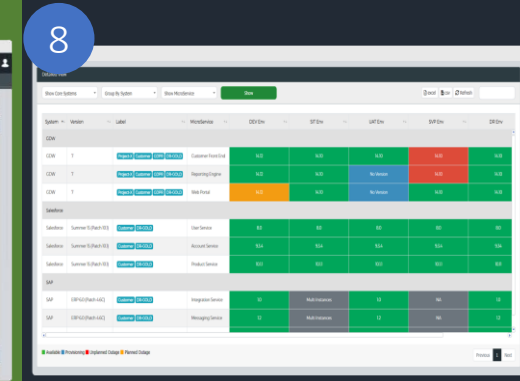
**Release & Env Calendars:** Coordinate and share critical dates and project milestones using our interactive scheduling capability.



**Environment Bookings:** Manage demand and avoid conflict across your IT environments using our advanced booking system.



**Environment Ticketing:** Enhance service support for environments and releases with our centralized ticketing process.



**Health & Versions:** Provide your project, dev and test teams with real-time information on environment health & versions.